

Don't let ultrasound imaging be a pain...



See how easy it can be when you get
FIT (***F***lexible ***I***maging ***T***echnology)
designed specifically for
musculoskeletal applications

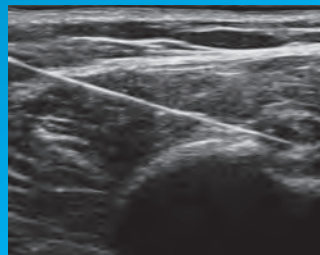


Get *FIT* and take the pain out of imaging

Exclusively from Terason, **FIT** delivers the next wave of advancements for ground-breaking, innovative ultrasound exams. With extensive value-added features, including enhanced image quality, MSK-specific presets, X-Site Transducers, and an intuitive interface, the t3200 will prove to be the best *fit* for your busy practice.

Enhanced image quality and clarity provides detailed visualization of bony landmarks, muscles, tendons, ligaments, joints and soft tissue in both superficial and deep structures.

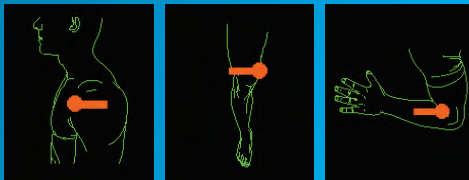
OmniBeam™ increases spatial detail and accuracy of curved surfaces while **TeraVision™ II** provides refined texture and detail.



Biceps Tendon Sheath Injection



Rotator Cuff Tear



Body markers appear on screen to identify currently selected exam type

X-Site Transducers with state-of-the-art technology, provide higher frequency imaging across a full range of depths.

MSK-specific presets facilitate a simple exam right at your fingertips.

- Custom exams with quick and easy documentation
- Simple study review with **EZ-Viewer™**



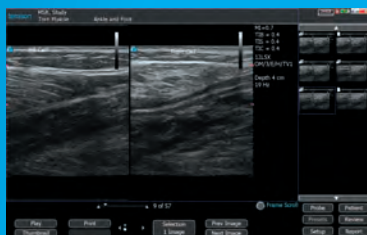
15L4 Linear Array



6C1 Curved Array



16HL7 Linear Array



Split-screen for quick side-by-side comparison

Intuitive Interface makes navigation easy and integration into your practice seamless. Now, only Terason enables you to streamline your workflow and leverage laptop computer versatility creating an easy *fit* for your busy practice.

 **terason**
*revolutionizing
ultrasound*

Terason, a division of Teratech Corporation
77 Terrace Hall Avenue • Burlington MA 01803
1-866-TERASON • 781-270-4143 • www.terason.com
©2010 Teratech Corporation. All rights reserved. 16-3179 Rev 2

An affordable investment in a Terason system is protected for years to come with fast, responsive remote support, full-coverage warranties, and a comprehensive upgrade path.